



Johns Manville
A Berkshire Hathaway Company

BUILDING ENVELOPE SOLUTIONS

OFFERING A LARGE PORTFOLIO
OF INSULATION PRODUCTS—FOR
WALLS, ROOFS AND FOUNDATIONS



WHO WE ARE

Johns Manville offers a large portfolio of insulation products for the commercial building envelope, for walls, roofs and foundations. Our insulation solutions work seamlessly together for a complete system.

From polyiso sheathing to closed cell spray foam to mineral wool, we have reliable, superior products for all your applications.

When you choose JM, you get products engineered for quality and performance. Plus, they're backed by JM's best-in-class customer support, so we've got you covered.

BENEFITS OF JM INSULATION PRODUCTS INCLUDE:



THERMAL EFFICIENCY



FIRE RESISTANCE



AIR RESISTANCE



ACOUSTIC CONTROL



MOISTURE MANAGEMENT

AVAILABLE PRODUCTS

AP™ FOIL EXTERIOR POLYISO SHEATHING

Johns Manville AP™ Foil-Faced Polyiso Continuous Insulation board provides exceptional heat, moisture and air control to protect your building's exterior wall assembly. AP Foil consists of a uniform closed cell polyisocyanurate foam core bonded on each side to a foil facer. Polyiso provides one of the highest R-values per inch of any rigid insulation, and when properly installed, it functions as a water-resistive barrier, vapor barrier and air barrier, eliminating the need for additional components.

Polyiso Comparison Charts

CONTINUOUS EXTERIOR INSULATION		EXPOSED EXTERIOR INSULATION	
Manufacturer	Product	Manufacturer	Product
Johns Manville <small>A Berkshire Hathaway Company</small>	AP™ Foil-Faced	Johns Manville <small>A Berkshire Hathaway Company</small>	CI Max®
Atlas	EnergyShield®	Atlas	EnergyShield® Pro
DuPont	Thermax™ (ci)	DuPont	Thermax™
Hunter	Xci Foil	Hunter	Xci 286
	Xci Class A	Rmax	Thermasheath® -XP
Rmax	ECOMAXci® FR Air Barrier		TSX-8510
	EVOMAXci™	Carlisle	R2+® Sheathe
	Thermasheath®		
	R-Matte® Plus-3		
IKO	EnerFoil™		
Carlisle	R2+® Silver		
Firestone	Enverge™ CI Foil		

Performance Advantages

- Thermal Insulation
- Water-Resistive Barrier
- Vapor Barrier
- Air Barrier
- Noncorrosive
- Lightweight

Approvals and Certifications

- NFPA 285 Approved for ACM Panels
- ABAA Certified for Air/Water Barrier
- Energy Star



CORBOND® IV CLOSED CELL SPRAY FOAM

Johns Manville Corbond® IV closed cell spray polyurethane foam (SPF) is a next generation HFO blown SPF insulation system. The HFO technology allows JM Corbond IV to be produced with a low Global Warming Potential and with an Ozone Depletion Potential of zero. Its high yield, superior thermal and moisture performance, plus its exceptional sprayability and adhesion, make it an ideal choice for high-performing energy efficient buildings. It's recommended for exterior and interior walls, floors, ceilings, attics and crawl spaces.

Performance Advantages

- Energy Efficiency
- Air Barrier
- Increased Racking Strength
- Exceptional Adhesion

Approvals and Certifications


- GREENGUARD and GREENGUARD Gold
- Energy Star
- QAI
- UES



CLADSTONE™ MINERAL WOOL

Johns Manville CladStone™ comes in four different densities: 45 (4.5 pcf), 60 (6.0 pcf), 80 (8.0 pcf), and 110 (11.0 pcf). JM Cladstone is a continuous insulation mineral wool product that is specifically manufactured for superior performance in cavity wall and rain screen applications. CladStone can be installed with a variety of exterior cladding systems.

Mineral Wool Product Comparison

	EXTERIOR				INTERIOR			
	Continuous Insulation		Curtainwall	Window Wall	Fire Stop	Thermal	Acoustic/Fire	
						Commercial	Residential	
 Johns Manville A Berkshire Hathaway Company	JM Cladstone™ 45 60	JM Cladstone™ 80 110	MinWool® Curtainwall 40 80	MinWool® Window Wall	Safing	TempControl®	MinWool® SAFB	Sound & Fire Block®
ROCKWOOL®	CavityRock®	ComfortBoard™ 80 110	CurtainRock® 40 80	CurtainRock®	Safe	ComfortBatt®	AFB	Safe 'n' Sound®
Thermafiber®	RainBarrier® 45 HD	RainBarrier® ic HC and ic HC Plus	FireSpan® 40 90	N/A	Safing	UltraBatt™	SAFB	Fire & Sound Guard®

Performance Advantages

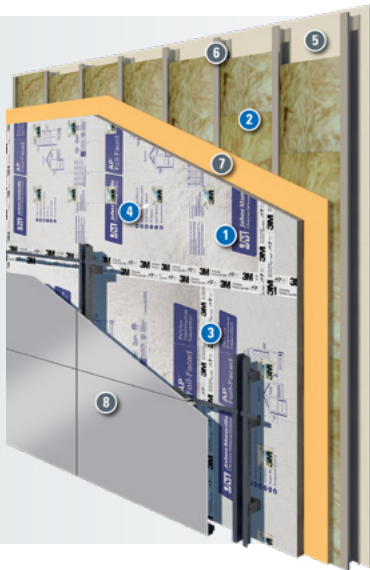
- Noncombustible
- Durable and Inorganic
- Water Repellent

Approvals and Certifications

- NFPA 285
- GREENGUARD

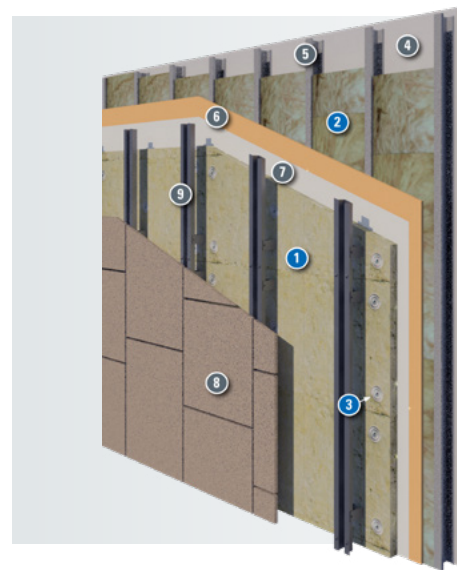


ENCLOSURE SOLUTIONS FOR EVERY WALL CONSTRUCTION TYPE



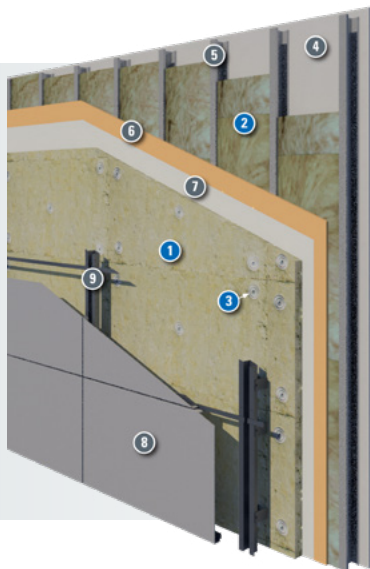
- 1 JM AP™ Foil-Faced Foam Sheathing
- 2 Cavity Insulation¹
Options include batts and rolls, blown-in, mineral wool, spray foam, hybrid or empty.
- 3 Joint and Penetration Sealing. Use JM-recommended components including 3M All-Weather Flashing Tape and Sealants
- 4 JM Recommended Plates and Fasteners
- 5 Interior Wall Board
- 6 Concrete, concrete masonry unit, steel stud or wood
- 7 Exterior Sheathing
- 8 Exterior Cladding – ACM metal panels

¹Insulation materials available from JM.
²Attachment method may vary depending on wall assembly components and local building code requirements.
 Wall assembly is for reference only and not to be used as a substitute for professional engineering design and documentation required by building code, contract, or applicable laws.



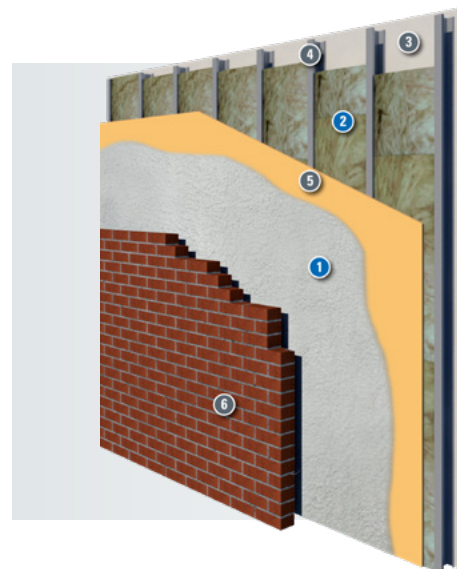
- 1 JM ClasStone™
- 2 Cavity Insulation¹
Options include batts and rolls, blown-in, mineral wool, spray foam, hybrid or empty.
- 3 Mechanical Fastener²
- 4 Interior Wall Board
- 5 Concrete, Concrete Masonry Unit, Steel Stud or Wood
- 6 Exterior Sheathing
- 7 Independent Air and Water-Resistive Barrier
- 8 Exterior Cladding – Fiber Cement Panels
- 9 Exterior Cladding Attachment System

¹Insulation materials available from JM.
²Attachment method may vary depending on wall assembly components and local building code requirements.
 Wall assembly is for reference only and not to be used as a substitute for professional engineering design and documentation required by building code, contract, or applicable laws.



- 1 JM ClasStone™
- 2 Cavity Insulation¹
Options include batts and rolls, blown-in, mineral wool, spray foam, hybrid or empty.
- 3 Mechanical Fastener²
- 4 Interior Wall Board
- 5 Concrete, Concrete Masonry Unit, Steel Stud or Wood
- 6 Exterior Sheathing
- 7 Independent Air and Water-Resistive Barrier
- 8 Exterior Cladding – Metal Panels
- 9 Exterior Cladding Attachment System

¹Insulation materials available from JM.
²Attachment method may vary depending on wall assembly components and local building code requirements.
 Wall assembly is for reference only and not to be used as a substitute for professional engineering design and documentation required by building code, contract, or applicable laws.



- 1 JM Corbond® IV Closed-Cell Spray Foam
- 2 Cavity Insulation¹
Options include batts and rolls, blown-in, mineral wool, spray foam, hybrid or empty.
- 3 Interior Wall Board
- 4 Structure
- 5 Exterior Sheathing
- 6 Exterior Cladding – Brick, Stucco, Natural Stone, Concrete, Terracotta, or Other Material that Meets Code.

¹Insulation materials available from JM.
²Attachment method may vary depending on wall assembly components and local building code requirements.
 Wall assembly is for reference only and not to be used as a substitute for professional engineering design and documentation required by building code, contract, or applicable laws.

CONTACT US

Questions? Reach out to our Building Envelope team at buildingenvelope@jm.com. For more product specific information, including datasheets, technical documents and other resources, visit JM.com.