

CUT IN REGLET 1" DEEP MIN. PRE-SATURATE EDGE OF JM PMMA SCRIM AND TUCK INTO REGLET. (THIS TECHNIQUE IS OPTIONAL AND IS FOR CONC./MASONRY ONLY. TYPICALLY TERMINATE JM PMMA FLASHING ON WALL SURFACE 8" HIGH.)

APPLY APPROPRIATE SEALANT CONTINUOUS ALONG TOP OF FLASHING (FOR REGLET INSTALLATION ONLY)

THOROUGHLY CLEAN STEEL AND APPLY JM PMMA PRIMER PRIOR TO INSTALLATION OF JM PMMA MEMBRANE FLASHING

LADDER STRINGER WRAPPED WITH JM PMMA MEMBRANE AND EXTENDED ONTO ROOF MEMBRANE

ROOF LADDER ANCHORED TO BUILDING (BY OTHERS)

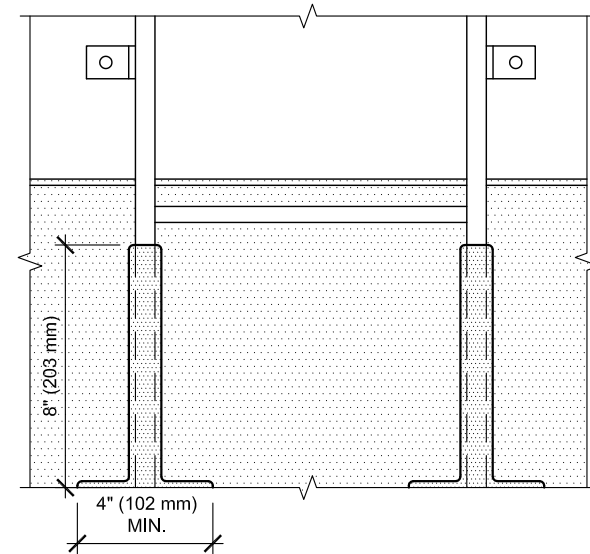
PREPARE, LEVEL & PATCH SUBSTRATE WITH JM PMMA REPAIR PASTE AFTER PRIMING & PRIOR TO INSTALLATION OF JM PMMA MEMBRANE

JM PMMA MEMBRANE FLASHING EXTENDED 4" MIN. HORIZONTALLY ONTO PREPARED AND PRIMED SUBSTRATE

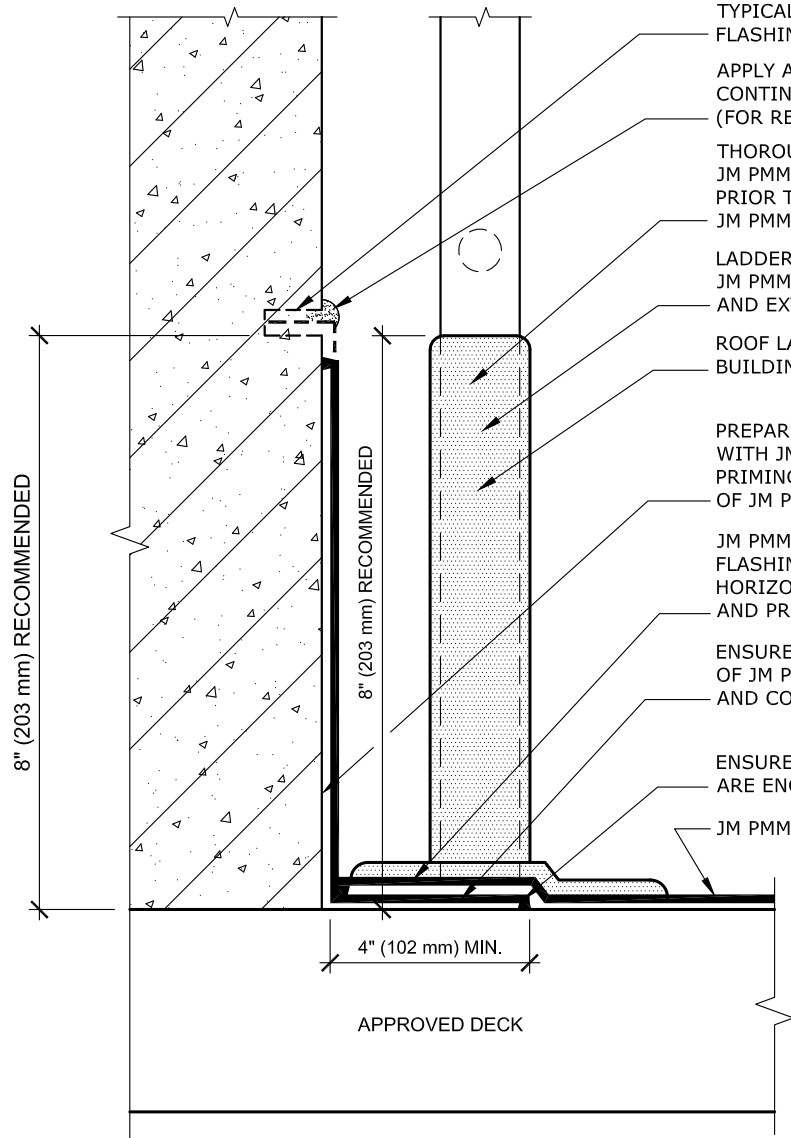
ENSURE FULL RESIN SATURATION OF JM PMMA SCRIM AND CONTACT WITH SUBSTRATE

ENSURE ALL MEMBRANE TERMINATIONS ARE ENCAPSULATED IN JM PMMA RESIN

JM PMMA FIELD MEMBRANE



LADDER ELEVATION



NOTES:

1. REFER TO JOHNS MANVILLE WEBSITE ([www.jm.com](http://www.jm.com)) FOR MOST UP-TO-DATE INFORMATION.
2. PLEASE SEE JM PMMA FLASHING SPECIFICATIONS FOR A FULL DESCRIPTION OF INSTALLATION INSTRUCTIONS AND REQUIREMENTS WHICH ARE CONSIDERED A PART OF THIS DETAIL.
3. ANY CARPENTRY OR METAL WORK SHOULD BE DESIGNED AND CONSTRUCTED IN ACCORDANCE WITH LOCAL CODE REQUIREMENTS AND/OR PROJECT SPECIFICATIONS. THESE COMPONENTS SHOULD BE REVIEWED AND APPROVED BY A LICENSED DESIGN PROFESSIONAL.
4. JM PMMA MEMBRANE FLASHING CONSISTS OF JM PMMA FLASHING RESIN, JM PMMA SCRIM, JM PMMA FLASHING RESIN. USE THE APPROPRIATE JM PMMA PRIMER DEPENDING ON TYPE OF SUBSTRATE.
5. ALL SEALANTS / CAULKING SHALL BE PERIODICALLY INSPECTED AND MAINTAINED BY THE BUILDING OWNER THROUGHOUT THE LIFE OF THE ROOF.

## DECK MOUNTED LADDER BASE FLASHING

DRAWING NO.

**L-FW-06**

FLASHING WALL

MEMBRANE TYPE:

JM PMMA

MAXIMUM GUARANTEE TERM:

20 YEAR

ISSUE DATE

04-10-24

SCALE

N.T.S

Johns Manville is a manufacturer of commercial roofing products and offers this general conceptual information to you as a courtesy for general educational purposes only. This complimentary assistance is not to be either used or relied upon by anyone as a substitute for professional engineering design and documentation required by any building code, contract, or applicable law. By accepting the general conceptual information, you agree it does not constitute any representations, endorsements of, or an assumption by Johns Manville of any duty or liability for either the adequacy of the design of a building, any of its components or the sufficiency of any construction.

