

JM 3" EPDM SEAM TAPE
EXPOSE 1/8" TO 1/4"

JM 6" EPDM SEALING STRIP

12" X 12" (304 mm) PATCH CUT FROM
JM EPDM 6" PEEL & STICK FLASHING

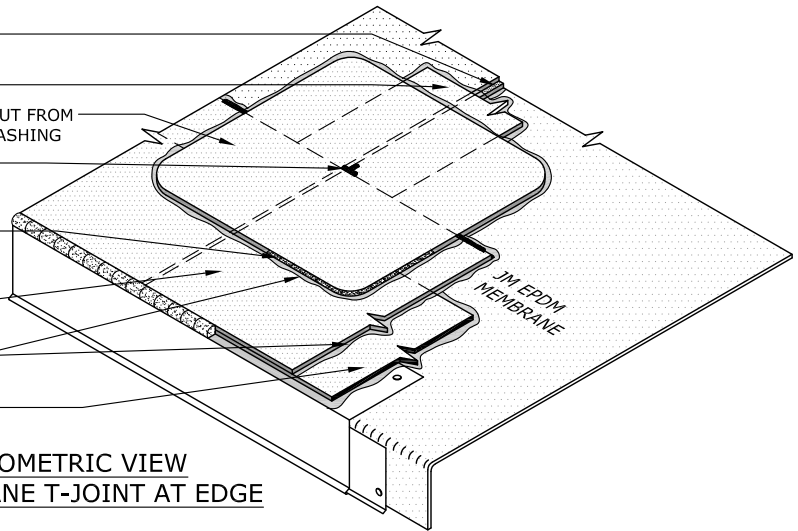
APPLY JM SINGLE PLY LVOC
CAULK UNDER THE PATCH
AT T-JOINT INTERSECTION

JM SINGLE PLY LVOC CAULK
ALL AROUND T-JOINT PATCH
AND SEALING STRIP EDGES

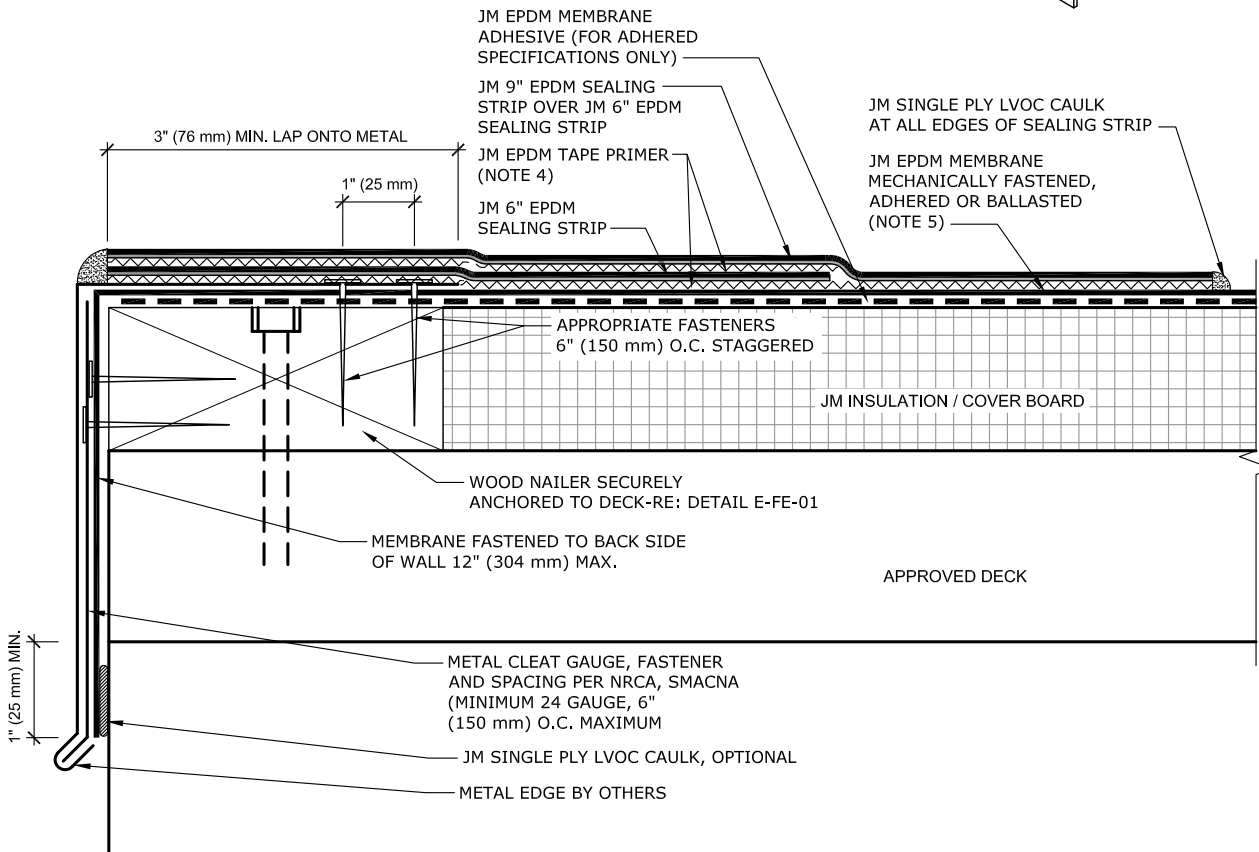
JM 9" EPDM
SEALING STRIP

JM EPDM TAPE PRIMER
(NOTE 4)

JM 6" EPDM
SEALING STRIP



**ISOMETRIC VIEW
MEMBRANE T-JOINT AT EDGE**



NOTES:

1. REFER TO JOHNS MANVILLE WEBSITE (www.jm.com) FOR MOST UP-TO-DATE INFORMATION.
2. PLEASE SEE SINGLE PLY FLASHING SPECIFICATIONS FOR A FULL DESCRIPTION OF INSTALLATION INSTRUCTIONS AND REQUIREMENTS WHICH ARE CONSIDERED A PART OF THIS DETAIL.
3. ANY CARPENTRY OR METAL WORK SHOULD BE DESIGNED AND CONSTRUCTED IN ACCORDANCE WITH LOCAL CODE REQUIREMENTS AND/OR PROJECT SPECS. THESE COMPONENTS SHOULD BE REVIEWED AND APPROVED BY A LICENSED DESIGN PROFESSIONAL.
4. JM EPDM TAPE PRIMER MUST BE APPLIED ON ALL SURFACES COMING INTO CONTACT WITH JM EPDM PEEL & STICK FLASHING.
 - JM EPDM (BLACK) MEMBRANE REQUIRES:
JM EPDM TAPE PRIMER OR JM SINGLE PLY MEMBRANE PRIMER (LOW VOC).
 - JM WHITE EPDM MEMBRANE REQUIRES:
JM TPO MEMBRANE PRIMER OR JM SINGLE PLY MEMBRANE PRIMER (LOW VOC).
5. REINFORCED JM EPDM MEMBRANE IS REQUIRED FOR MECHANICALLY FASTENED INSTALLATIONS.
6. REFER TO DETAIL E-FE-V3 FOR 30 YEAR FLASHING METHOD.

DRAWING NO.

E-FE-V3

FLASHING EDGE

METAL DRIP EDGE WITH JM EPDM SEALING STRIP 30 YR

MEMBRANE TYPE:
JM EPDM / JM WHITE EPDM

MAXIMUM GUARANTEE TERM:
30 YEAR

SCALE
N.T.S

ISSUE DATE
02-15-24

Johns Manville is a manufacturer of commercial roofing products and offers this general conceptual information to you as a courtesy for general educational purposes only. This complimentary assistance is not to be either used or relied upon by anyone as a substitute for professional engineering design and documentation required by any building code, contract, or applicable law. By accepting the general conceptual information, you agree it does not constitute any representations, endorsements of, or an assumption by Johns Manville of any duty or liability for either the adequacy of the design of a building, any of its components or the sufficiency of any construction.

